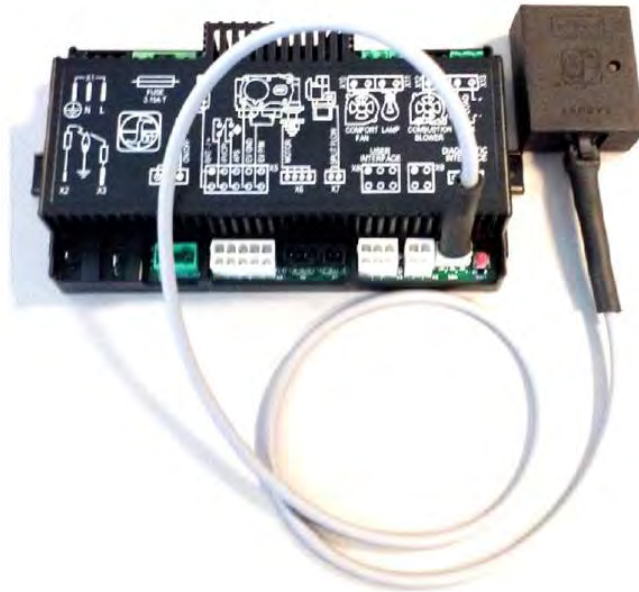




marquis  
COLLECTION | by Kingsman

**- Proflame 2 Wifi Dongle Instructions -**





# Table of Contents

Table of Contents.....	3
Introduction: Proflame 2 WiFi Dongle Hardware, Proflame Connect Application.....	4
Step One: Download Proflame Connect App.....	5
Step Two: Install WiFi Dongle.....	5-6
Step Three: Configure the Fireplace.....	6
To Configure a Fireplace with the iOS App.....	6-7
To Configure a Fireplace with the Android App.....	7
Searching for New Fireplaces.....	8
Resetting the WiFi Dongle.....	8
Using the Proflame Connect App.....	9
WiFi Dongle Locations.....	10

# Introduction

## Proflame 2 WiFi Dongle Hardware



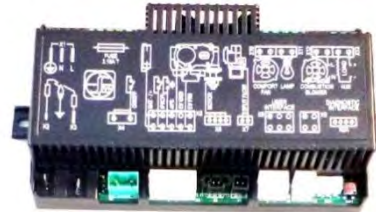
CABLE



WiFi DONGLE  
(584.526)

**PART NUMBER:  
RCP2WIFI**

## Supplied with Fireplace



WiFi-READY PROFLAME 2 MODULE (584.665)



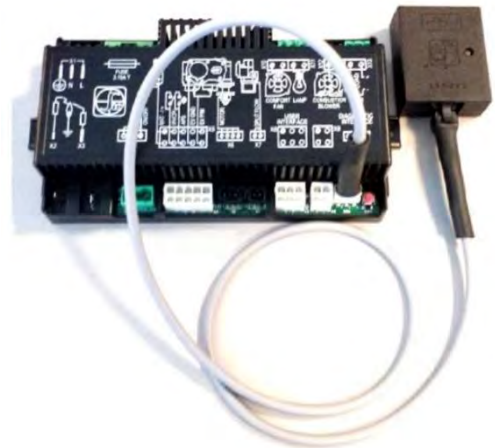
WALL MOUNT REMOTE CONTROL (584.090)

## Proflame 2 WiFi Dongle

The Proflame 2 Wi-Fi Dongle will connect to an existing WiFi network and create a standalone WiFi network with a dedicated access point.

The Proflame 2 WiFi Dongle is connected to the X0A serial port on the Proflame 2 Module.

When a virtual assistant, such as Alexa or Google Assistant is used, the Dongle has a connection outside the local WiFi, connecting to Amazon Web Services (AWS). This is a secure connection.



## Proflame Connect Application

The Proflame 2 WiFi Dongle allows WiFi-ready fireplaces to be controlled by a smartphone or virtual assistant (such as Amazon Alexa or Google Assistant) using the Android/iOS **Proflame Connect** application.

The **Proflame Connect** application may be downloaded from the corresponding stores: (Google) Play Store and (Apple) App Store.

The **Proflame Connect** application allows control of the fireplace using only the local connection: all data is exchanged in the local WiFi network only. **No data is exchanged with external servers on the internet.**



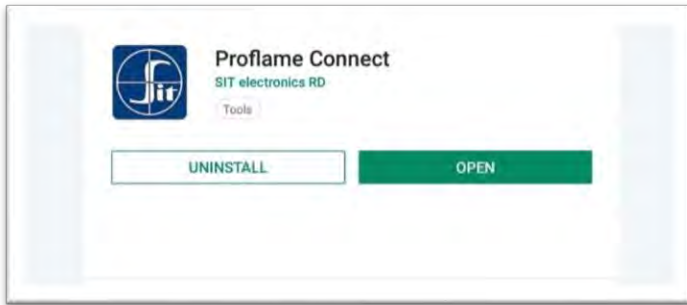
# WiFi Dongle Installation

## Step One: Download Proflame Connect App.

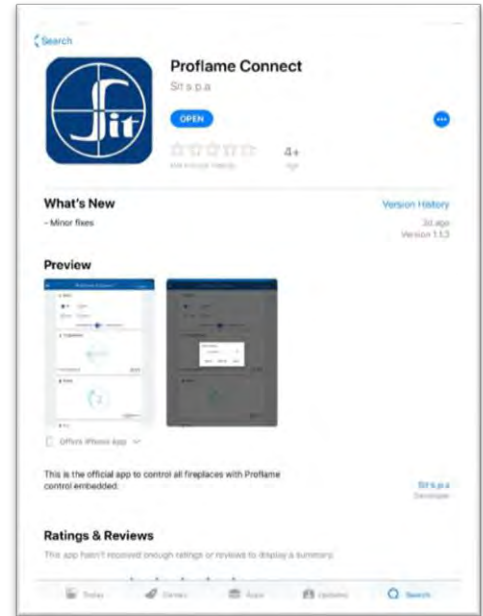
Search for the **Proflame Connect** app in either the Google Play Store or the Apple App Store, and download it.

Your phone must be connected to the WiFi network you wish the WiFi Dongle to use before your fireplace can be configured.

**Note:** The **Proflame Connect** app will work with Android 5.1 or higher versions and iOS 10.0 or higher versions only.



Proflame Connect App for Android.



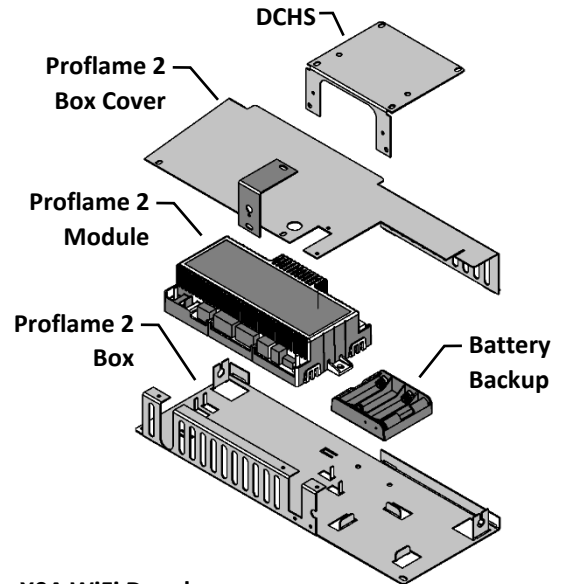
Proflame Connect App for iOS.

## Step Two: Install WiFi Dongle

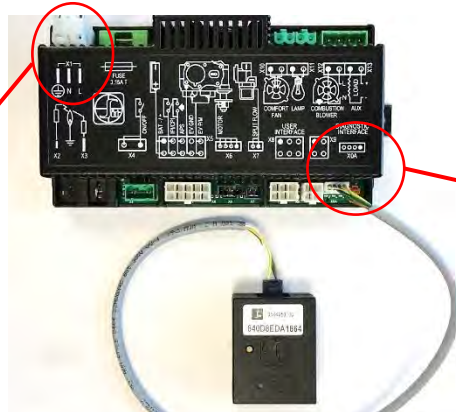
- Turn off the fireplace and allow the appliance to cool completely.
- Locate the **Proflame 2 Module** within the fireplace. It will be located near the front access area of the fireplace for built in appliances, and beneath the fireplace for freestanding stoves. Remove the screws from the cover of the Proflame 2 Box. The connection sockets on the Proflame 2 Module must be accessible.
- Disconnect power by either unplugging the power cord from its receptacle or unplugging the X1 Connection on the Proflame 2 Module.

**Note:** Use Caution when working with Proflame 2 Module and its components. Wiring harnesses and connections can be easily damaged.

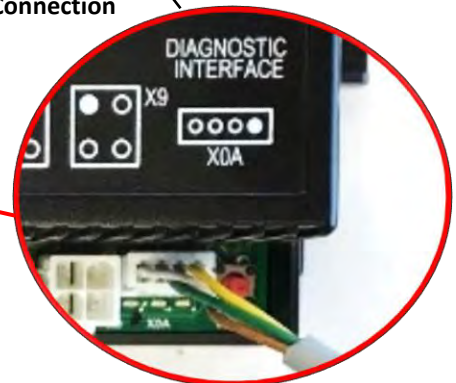
- Connect the WiFi Dongle to the **X0A Connection** on the Proflame 2 Module.



X1 Power Connection



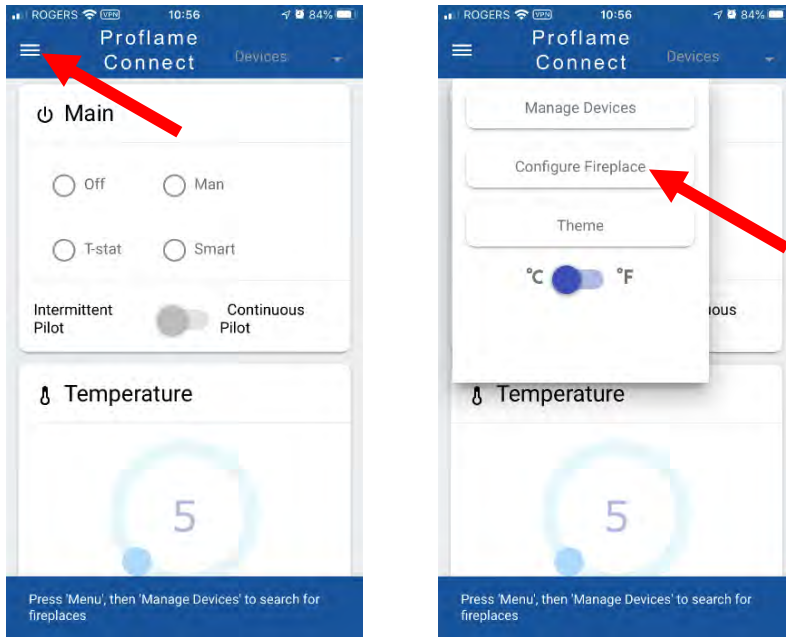
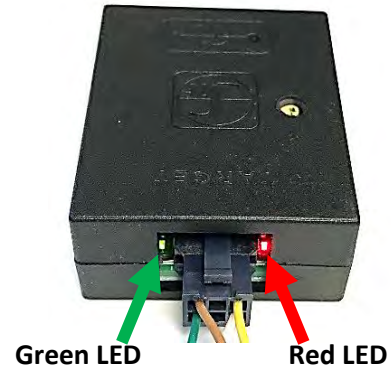
X0A WiFi Dongle Connection




### Step Three: Configure the Fireplace

- a) Restore power to the Proflame 2 Module.
- b) Pair the Wall Mount Remote Control (584.090) supplied with your fireplace, if not already done.
- c) Once the WiFi Dongle is connected to the Proflame 2 Module and power is restored, two LED lights, one Green and one Red will light on either side of the wire connector. The WiFi Dongle is now ready to be configured.
- d) Open the **Proflame Connect app**. Select "Configure Fireplace" from the menu on the top left. Refer to the iOS or Android Configuration procedure below.

Ensure that Green and Red LED lights are on before configuring Fireplace.

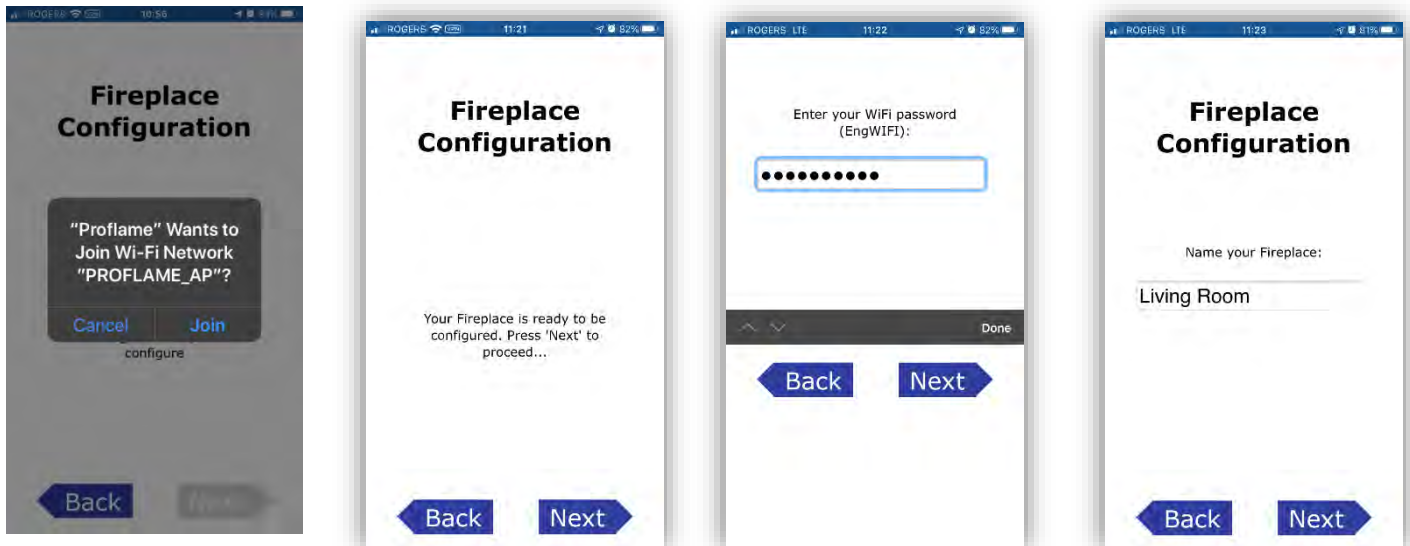


 The GPS must be enabled for the correct functioning of the Proflame Connect app (Google/Apple requirement).

**NOTE: The Wall Mount Remote Control (584.090) supplied with the fireplace must be present and functioning for the Proflame Connect app to work.**

### To Configure a Fireplace with the iOS App:

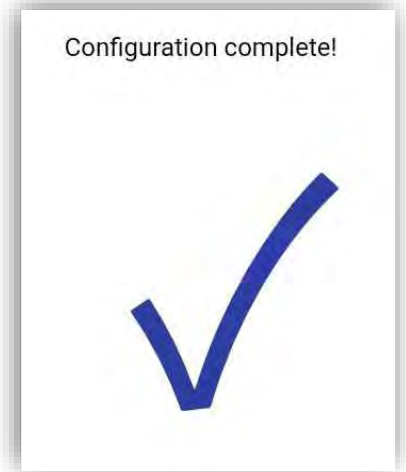
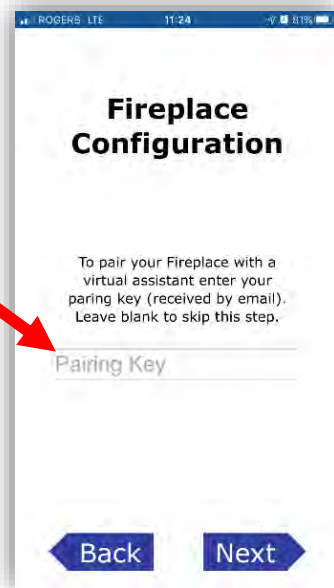
Once the WiFi Dongle is detected you will be asked to enter your WiFi password and name your Fireplace. Remain near the fireplace while entering the WiFi password.





If you wish to use your Fireplace with a Virtual Assistant, enter the pairing key that you received by email. To get the key to use voice commands you must register your device on the registration web page.

If you don't want to use voice commands, leave the field blank and press Next.

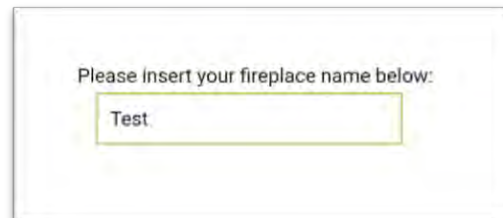


The Configuration procedure is now completed.

## To Configure a Fireplace with the Android App:

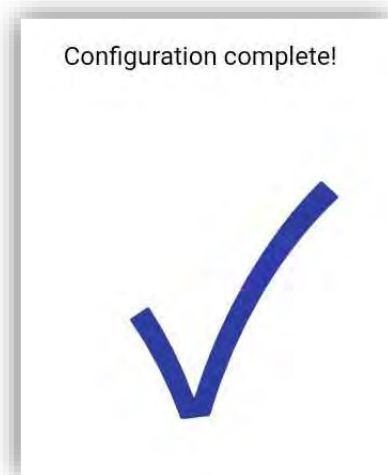
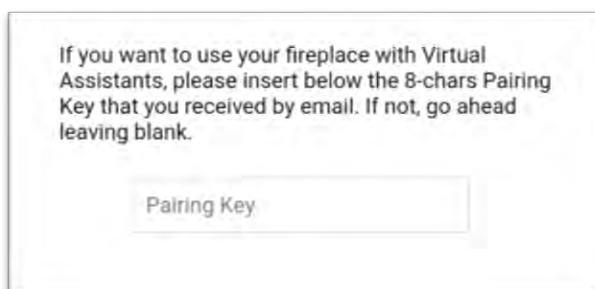
Once the WiFi Dongle is detected you will be asked to enter your WiFi password and name your Fireplace.

**Remain near the fireplace while entering the WiFi password.**



If you wish to use your Fireplace with a Virtual Assistant, enter the pairing key that you received by email. To get the key to use voice commands you must register your device on the registration web page.

If you don't want to use voice commands, leave the field blank and press Next.

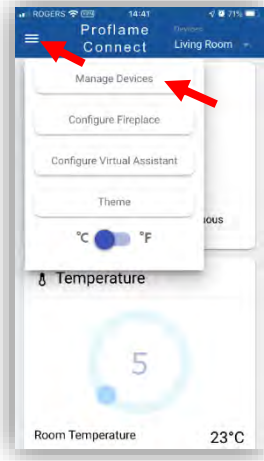


The Configuration procedure is now completed.

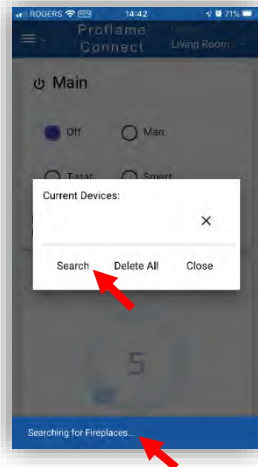
## Searching for New Fireplaces

Once a fireplace has been configured, the Proflame Connect app will be able to add it to your list of fireplaces by searching for it.

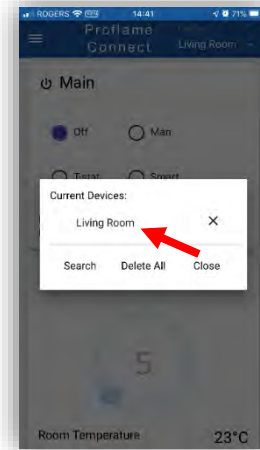
Select **"Manage Devices"** from the top left menu.



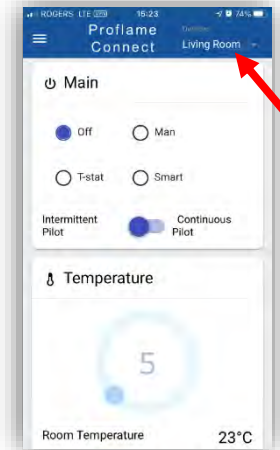
Select **"Search"**



The application will scan the local network and update the list of configured Fireplaces.



You will now be able to view and change settings for the selected fireplace.



## Resetting the WiFi Dongle

A new WiFi Dongle has no saved networks in its memory. When it is first turned on the WiFi Dongle is in **"Access Point (AP)"** mode, and ready to be configured using the Proflame Connect app.

Once it is connected to the local WiFi network and configured, the Dongle will be in **"Station (STA)"** mode. The WiFi Dongle will now be in Station mode every time it is started up.

It is possible to reset the WiFi Dongle and return it to **Access Point (AP)** mode.

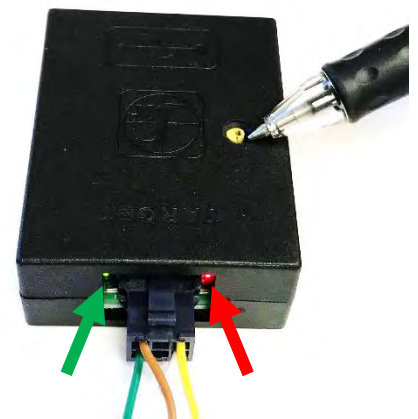
**To reset the WiFi Dongle:** press and hold the button until the Green and Red LED's light up (5-10 seconds). The WiFi Dongle is now in AP mode.



**Access Point (AP) mode**  
Green and Red LED on



**Station (STA) mode**  
Green LED on



**To Reset:**  
Press Button until Green and Red LED's come on



## Using the Proflame Connect App

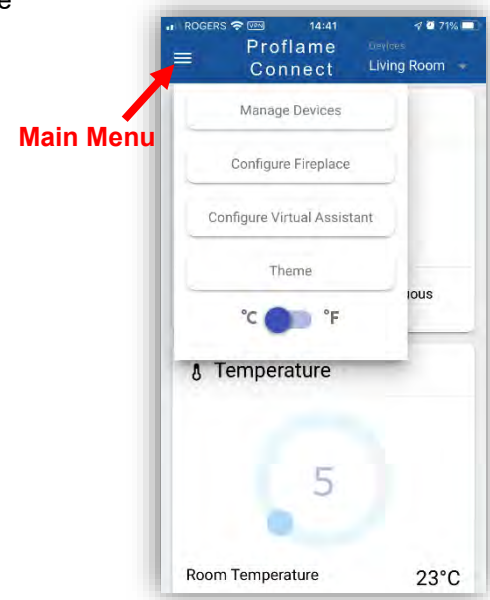
The Wall Mount Remote Control (584.090) supplied with the fireplace must be present and functioning for the Proflame Connect app to work.

The **Main Menu** is located at the upper left corner of the main page.

### Main Menu icons:

- **Manage Devices** – Switch, search for, and delete Fireplaces
- **Configure Fireplace** – Searches for new Fireplaces to add to list of existing Fireplaces
- **Configure Virtual Assistant** – Location to enter pairing key
- **Theme** – Change the colors of the application
- **Temperature Unit Switch** – allows the user to choose the temperature unit.

**NOTE: Multiple users can control a fireplace at the same time. When a user sends a command, this command is reflected to all users of that fireplace.**

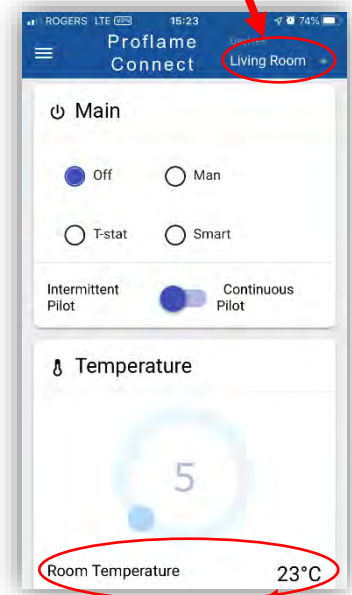


The **Main Page** of the application has a scrolling display of Fireplace controls and functions.

### Main Page Controls:

- **Main Mode** – The operating mode of the Fireplace. Can be set to Off, Manual, Thermostat, or Smart Thermostat Mode.
  - **Man** – Manual Mode: turns fireplace main burner to “ON”, must be turned to “OFF” mode to extinguish main burner.
  - **T-stat** – Thermostat Mode: the fireplace will maintain the set temperature as read from the Wall Mount Remote Control.
  - **Smart** – Smart Thermostat Mode: modulates the flame height down in accordance to the difference between the set point and the room temperature, allowing the flame to be enjoyed for a longer period of time.
- **Pilot** – Sets the pilot flame function.
  - **Intermittent Pilot** - reduces gas consumption from the pilot when your fireplace is not in regular use, in colder months you can switch to the CPI (continuous pilot ignition)
  - **Continuous Pilot** – CPI (continuous pilot ignition) when you're enjoying your fireplace more often while keeping cold air from penetrating through the fireplace and into your living area (recommended when outdoor temperatures drop below freezing).
- **Temperature** – Temperature can be set within the following ranges: Celsius- 5 to 35° Fahrenheit- 41 to 95°.
- **Flame** – This is the Flame Control. It creates a higher or lower flame with six levels of flame height to choose from.
- *Split Flow* switch button is not used.
- **Fan** – The Fan Speed Control circulates air into your room at your choice of six levels for more or less warmth.
- **Lamp** – The Accent Lighting control, with six levels of lighting within your fireplace allows you to create the perfect ambience (LED Lights are non-dimmable, halogen bulbs are dimmable).
- **Auxiliary Output** – For possible auxiliary items. Can be set to on or off.

**Selected Fireplace appears at the top of the page**

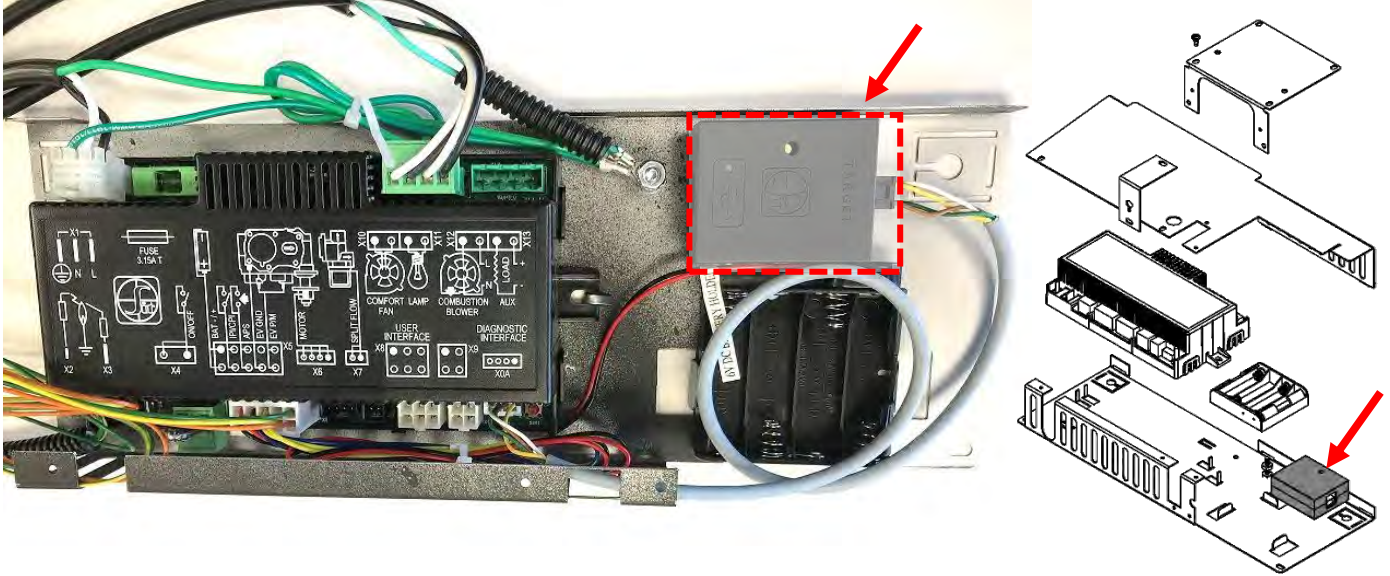


**Temperature**

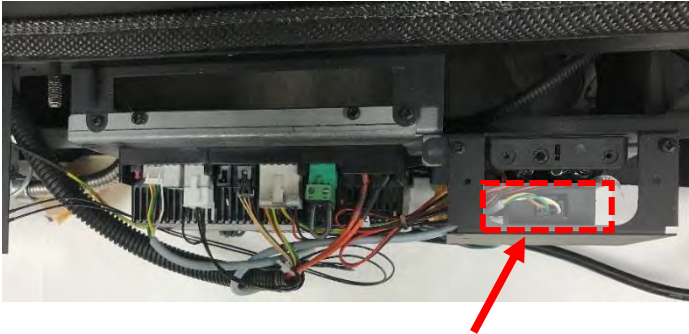
# WiFi Dongle Locations

Once the WiFi Dongle is configured and working correctly use the supplied Velcro adhesive to set in the appropriate location within the fireplace as shown below.

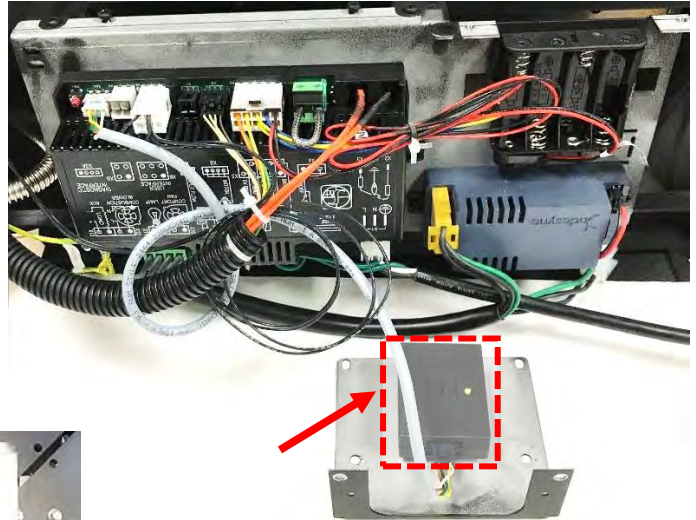
## Proflame 2 Box – Used in Kingsman and Marquis Fireplaces



## Proflame 2 Box – Enclave Series Units – Top View



## Proflame 2 Box – Enclave Series Units – Front View



## FDV200S Freestanding Stoves

